

Test Report

No. 2072101/JL

Date : Sep 29 2007

Page 1 of 2

The following samples were submitted and identified on behalf of the client as METAL COOKIE CUTTER, TINPLATE MATERIAL.

SGS Job No.	2489801
Style / Item No.	81389 / C12211
P.O. No.	
Buyer	
Supplier / Manufacturer	
Country of Origin	
Country of Destination	UNITED KINGDOM
Sample Receiving Date	SEP 14 2007
Testing Period	SEP 15 - 25 2007

Test Requested : In accordance with German Food, Articles of Daily Use and Feed Code of September 1, 2005 (LFGB), Section 30.
For material : Metal or metallic coating – Extractable Heavy Metal.

Test Method : Sample preparation in 3% acetic acid at 40°C for 2 hours, followed by analysis using Inductively Coupled Argon Plasma Spectrometry.

Test Results : Please refer to the next page.

Conclusion : When tested as specified, the submitted samples comply with the permissible safety limit as specified in LFGB, Section 30.

Signed for and on behalf of
SGS Hong Kong Ltd.

for Corey
Wong Tak Ming, William
Operations Manager

This document is issued by the Company subject to its General Conditions of Service printed overleaf or available on request and accessible at www.sgs.com. Attention is drawn to the limitations of liability, indemnification and jurisdictional issues defined therein. Unless otherwise stated: (a) the results shown in this document refer only to the sample(s) tested and (b) such sample(s) are retained for 30 days only. This document cannot be reproduced except in full, without prior approval of the Company. Any unauthorized alteration, forgery or falsification of the content or appearance of this report is unlawful and offenders may be prosecuted to the fullest extent of the law.

SGS Hong Kong Ltd. 5/F - 8/F, 12/F, 26/F & 28/F - 29/F, Metropole Square, 2 On Yiu Street, Siu Lek Yuen, Shatin, N.T., Hong Kong. t (852) 2334 4481 f (852) 2764 3126 www.hk.sgs.com H15583344

Test Report

No. 2072101/JL

Date : Sep 29 2007

Page 2 of 2

Test Results

Test Items	Result (mg/dm ²)	Maximum Permissible Limit (mg/dm ²)
	1	
Extractable Lead	< 0.001	0.010
Extractable Cadmium	< 0.001	0.005
Extractable Chromium	< 0.010	0.4
Extractable Nickel	< 0.010	0.1
Extractable Copper	< 0.010	0.5
Extractable Antimony	< 0.010	Not Detected
Extractable Cobalt	< 0.010	Not Detected

Sample Description:

1. Silvery Metal (Cookie Cutter)

- Note :
1. mg/dm² = milligram per square decimeter
 2. < = less than

Remark : Photo appendix is included.

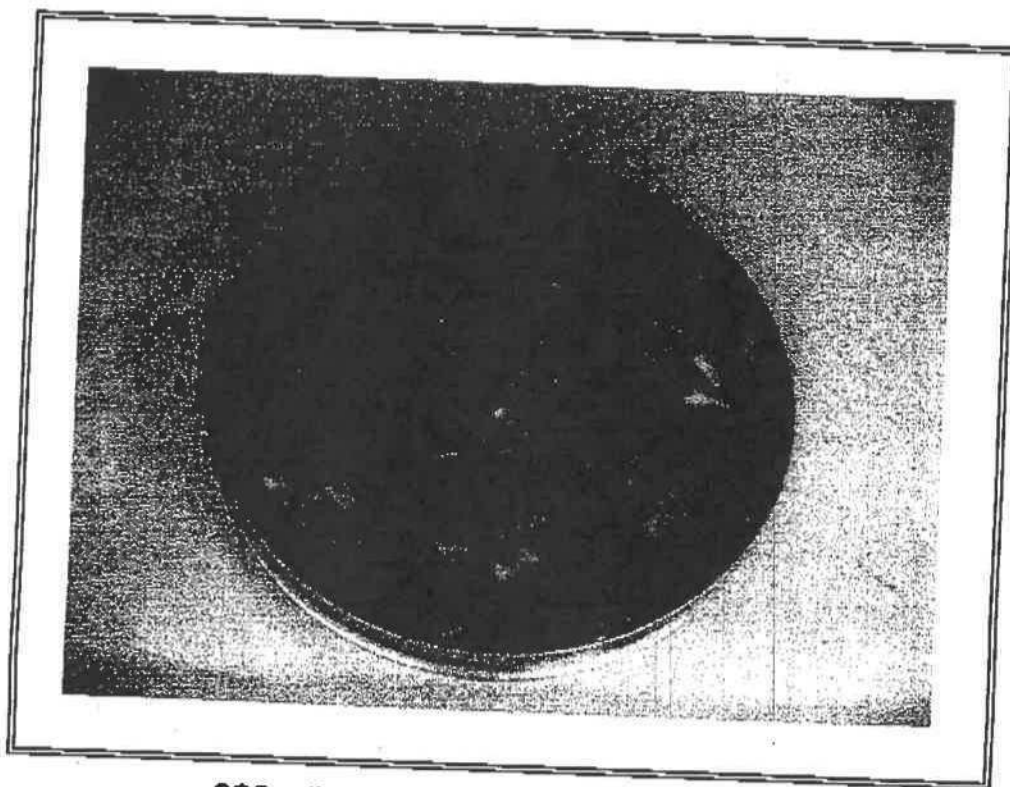
*** End of Report ***

This document is issued by the Company subject to its General Conditions of Service printed overleaf or available on request and accessible at www.sgs.com. Attention is drawn to the limitations of liability, indemnification and jurisdictional issues defined therein. Unless otherwise stated: (a) the results shown in this document refer only to the sample(s) tested and (b) such sample(s) are retained for 30 days only. This document cannot be reproduced except in full, without prior approval of the Company. Any unauthorized alteration, forgery or falsification of the content or appearance of this report is unlawful and offenders may be prosecuted to the fullest extent of the law.

Test Report No. : 2072101/JL

Sample Receiving Date : Sep 14 2007

PHOTO APPENDIX



SGS authenticate the photo on original report only

Page 1 of 1

Coray
Authorized Signature