

TEST REPORT

APPLICANT : SIER DISPOSABLES BV
ADDRESS : KRYPTONSTRAAT 8, 6718 WR EDE
SAMPLE DESCRIPTION : BAMBOO STRAWS
STYLE / ITEM NO. : STRAIGHT STRAW
MATERIAL NO. : 20058 / 20060
MATERIAL : BAMBOO
BUYER : SIER DISPOSABLES BV
COUNTRY OF ORIGIN : CHINA
AGE REQUESTED ON APPLICATION FORM : NOT PRESENT
SAMPLE RECEIVED DATE : JUN. 06, 2019
TEST PERIOD : JUN. 06, 2019 TO JUN. 10, 2019
RESULT SUMMARY :

TEST(S) REQUESTED BY APPLICANT:	RESULT
- Specific Migration of Formaldehyde refer to Regulation (EC) No 1935/2004 and Regulation (EU) No 10/2011 and its amendments.	PASS
- Pentachlorophenol refer to Council of Europe Resolution AP (2002)1.	PASS
- Total Arsenic Content according to Entry 19 of Regulation (EC) No 552/2009 amending Annex XVII of REACH Regulation (EC) No 1907/2006.	PASS

*****FOR FURTHER DETAILS, PLEASE REFER TO THE FOLLOWING PAGE(S)*****

SIGNED FOR AND ON BEHALF OF
EUROFINS TESTING TECHNOLOGY (SHENZHEN) CO. LTD.



Harry Chen
Lab & Technical Support Manager



Coco Luo
Lab & Reporting Manager



This test report is valid for the tested samples only. Without permission of the test center this test report is not permitted to be duplicated in extracts.
This test report does not entitle to carry any safety mark on this or similar products.

Material list

Testing material No.	Component	Material	Colour
1	Straw	Bamboo	Nature

Test Result:
Specific Migration of Formaldehyde

Limit refer to the Regulation (EU) No 10/2011 and its amendments.

Test condition :

Food simulant	Test duration/temperature
3% Acetic acid	2 hours / 70 °C

Test Sample		1	Detection limit	Limit
Parameter	Unit	Test result		
Formaldehyde	mg/kg	N.D.	1	15

Note: - 1 mg/kg = 1 ppm = 0.0001%

- °C = degree Celsius

- N.D. = Not Detected

Pentachlorophenol

Test method : EN ISO 15320: 2011.

Limit refer to Council of Europe Resolution AP (2002)1.

Test Sample		1	Detection limit	Limit
Parameter	Unit	Test result		
Pentachlorophenol (PCP)	mg/kg	N.D.	0.1	0.15

Note: - 1 mg/kg = 1 ppm = 0.0001%

- N.D. = Not Detected

TO BE CONTINUED

Eurofins Testing Technology (Shenzhen) Co. Ltd.

4/F, Building# 3, Runheng Dingfeng Industrial Park, No.1 Liuxian 3rd Road, Bao'an District, Shenzhen, P.R. China
 Tel.: +86 755 8358 5700 • Fax: +86 755 8358 5701 • Email: info.hk@eurofins.com • Website: www.eurofins.com / www.pt.eurofins.com

Total Arsenic content

Test method : EPA 3052: 1996, EPA 6020B: 2014.
The sample was digested with acid. Then the Arsenic content was determined by Inductively Coupled Plasma Mass Spectrometry (ICP-MS).

Limit : Not detectable - according to Entry 19 of Regulation (EC) No 552/2009 amending Annex XVII of REACH Regulation (EC) No 1907/2006.

Detection Limit : 1 mg /kg

Test No.		No. 1
Material No.		1
Parameter	Unit	Test Result
Arsenic (As)	mg/kg	N.D.

Note: - 1 mg/kg = 1 ppm = 0.0001%
- N.D. = Not Detected

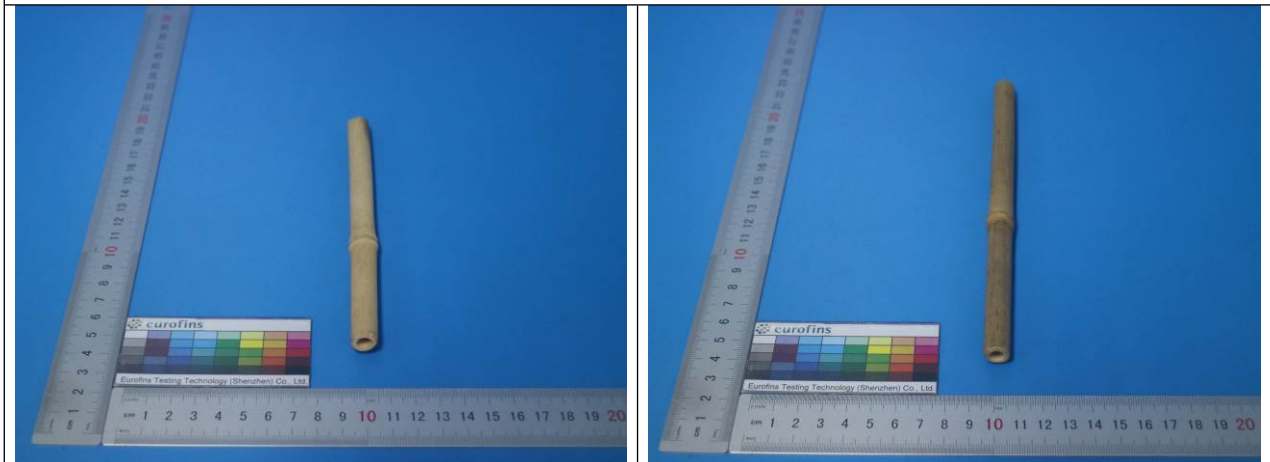
Other Information / Remark:

N/A

TO BE CONTINUED

Eurofins Testing Technology (Shenzhen) Co. Ltd.

4/F, Building# 3, Runheng Dingfeng Industrial Park, No.1 Liuxian 3rd Road, Bao'an District, Shenzhen, P.R. China
Tel.: +86 755 8358 5700 • Fax: +86 755 8358 5701 • Email: info.hk@eurofins.com • Website: www.eurofins.com / www.pt.eurofins.com

Photo Attachment**BAMBOO STRAWS**

END OF THE REPORT